

Type-Q102-CA+ Core Alignment Fusion Splicer



TYPE-Q102-CA+ Ordering Information

- Type-Q102-CAp-KIT-1 Components**
- Type-Q102-CA+ Quantum Fusion Splicer
 - Hard Transit Case
 - AC Adapter
 - Standard Battery
 - Cleaning Tools
 - Fiber protection Sleeve
 - Cooling Tray
 - Manual
 - Fiber Optic Stripper
 - Spare Electrodes

Type-Q102-CAp-KIT-2
Includes All of KIT-1 Components; Plus FC-6S-C Fiber Optic Cleaver

Type-Q102-CAp-KIT-6RSC
Includes All of KIT-1 Components; Plus FC-6RS Precision Bench Top Automatic Blade Rotation Cleaver

Type-Q102-CAp-KIT-8R
Includes All of KIT-1 Components; Plus FC-8R Hand-Held Automatic Blade Rotation Cleaver

Type-Q102-M12 Ribbon Fusion Splicer



TYPE-Q102-M12 Ordering Information

- Type-Q102-M12-KIT-6RM1 Components**
- Quantum Mass Fusion Splicer
 - Precision Automatic Blade Rotation
 - Bench Top Fiber Cleaver
 - Heated Jacket Remover
 - Power Cord
 - V-Groove Brush
 - Spare Electrodes
 - Manual
 - 250µm Holders
 - 12ct. Ribbon Fiber Holders
 - Hard Case
 - Cooling Tray

Type-Q102-M12-KIT-6RM2 Components
Includes All Type-Q102-M12-6RM1 Contents; Plus Ribbonizing Tool and Consumable Kit

- Type-Q102-M12-KIT-MPO2 Components**
- Quantum Mass Fusion Splicer
 - Bench Top Cleaver
 - Heated Jacket Remover
 - Power Cord
 - V-Groove Brush
 - Spare Electrodes
 - Hard Case
 - MPO Assembly Tool Kit
 - Consumable Kit
 - 12ct. Ribbon Fiber Holders
 - 250µm Holders
 - Cooling Tray

Type-Q102-M12-KIT-8R Components
Includes KIT-MPO2 Contents with FC-8R

Type-56 Automatic Adaptive Core Fusion Splicer



TYPE-56-CA Ordering Information

- Type-56-CA-KIT-1 Components**
- Type-56 Fusion Splicer
 - JR-M03 Fiber Stripper
 - Transit Case
 - AC Adapter and Power Cord
 - Spare Electrodes
 - Standard Battery
 - Manual
 - Fiber Protection Sleeves

Type-56-CA-KIT-5S
Includes All of Kit-1 Components; Plus FC-5S Precision Optical Cleaver

Type-56-CA-KIT-6RSC
Includes All of Kit-1 Components; plus a FC-6RS-C Precision Bench Top Automatic Blade Rotation Cleaver with Scrap Collector

Type-56-CA-KIT-8R
Includes All of Kit-1 Components; plus a FC-8R Hand-Held Automatic Blade Rotation Cleaver

Type-QH201e-VS Handheld Fusion Splicer



TYPE-QH201e-VS Ordering Information

- Type-QH201e-VS-KIT-1 Components (B) or (H)**
- Type-QH201e-VS Splicer
 - Transit Case* with Hard Case (H) or Backpack (B) Options (part number extension)
 - AC Adapter and Power Cord
 - 250µm Fiber Holders
 - 900µm Fiber Holders
 - Standard Battery
 - Cleaning Tools
 - Manual
 - Fiber Optic Stripper
 - Spare Electrodes

Type-QH201e-VS-KIT-2
Includes All of Kit-1 Components; Plus FC-6S Precision Optical Cleaver

Type-QH201e-VS-KIT-2R, Type-QH201e-VS-KIT-6RSC
Includes All of Kit-1 Components; plus a Precision Optical Cleaver with Automatic Rotating Blade & Scrap Catcher

Type-QH201e-VS-KIT-8R
Includes All of Kit-1 Components; plus a FC-8R Hand-Held Automatic Blade Rotation Cleaver

CATEGORY	DESCRIPTION	PART NUMBER	FOR USE WITH	UOM
Splice Protection Sleeves**	Single Fiber, 250 to 900mm, 60mm (500 per bx)	FPS-1-BX	All Units	1 box
	Single Fiber, 250 to 900mm single End Opening, Thin-2.6mm Diameter, 61mm (500 per bx)	FPS-61-2.6-BX	All Units	1 box
	2 to 12 ct. Ribbon, 40mm (250 per bx)	FPS-6-BX	All Ribbon Units	1 box
	250 to 900mm, 26mm (24 per pk)	FPS-26(24)	All Units	1 pk
	Single Fiber, 250 to 900mm, 40mm (500 per bx)	FPS-40-BX	All Units	1 box
Electrodes	Electrodes	ER-10	Q102, Q101-Series	1 pr
	Electrodes	ER-11	QH201e-VS	1 pr
Cleaning and Fiber Preparation Supplies	Fiber Optic Cleaner	FOC-QE	All Units	1 ea
	Alcohol Bottle (No Alcohol Included)	HL-2	All Units	1 ea
	Fiber Optic Wipes	FCW-HQ-50	All Units	1 ea
	Lint Free Mini-Cotton Swabs 2000/box	CTSW-1	All Units	1 box
	V-Groove Brush	VGB-003-CR	All Units	1 ea
	Fusion Cleaning Kit	FUS-CLN-KIT-OSP	All Units	1 ea
	PureConnect Connector/Bulk Simplex Cleaner	EFC-250-S	SC, ST, FC & E2000 APU/UPC	1 ea
	PureConnect Connector/Bulk Simplex Cleaner	EFC-125-S	LC Connectors APC & UPC	1 ea
	Pure Connect Connector/Bulkhead Multi-Fiber Cleaner	EFC-MPO-S	Male & Female MPO Ferrules	1 ea
	Lynx2 Splice-On Connector Ferrule	Lynx2-UML-C	All Holder Units	1 ea
	Lynx2 Splice-On Connector Cord/Sleeve Ferrule	Lynx2-UML-S	All Holder Units	1 ea
	Fiber Holder, Loose Buffer 250/900um, 900LT	FHS-025-LB5-L	900LT version of Lynx2 Splice-on Connector	1 ea
Lynx CustomFit® 2 Splice-On Connector Accessories	Fiber Holder, Loose Buffer 250/900um, 900LT Set	FHS-025-LB5-SET	All Units	
	Lynx2 Shears	Lynx2-Shears	Lynx2 Accessories	1 ea
	Lynx Splice-On Connector Carrying Case for Tools	LYNX-BAG	Lynx2 Accessories	1 ea
	LYNX2 SOC Toolkit for 2.0 - 3.0	LYNX2-TKU-2.0-3.0	Lynx2 Single Connectors	1 ea
	Single Fiber Adapter (250mm and 900mm)	FC6-ADAPTER	FC-6 Cleavers	1 ea
	One Step 1 to 12-Fiber Ribbon Cleaver with Auto Blade Rotation	FC-8R	All Units	1 ea
	High Precision Single Fiber Cleaver	FC-6S	All Single Units	1 ea
	Precision Optical Fiber Cleaver - for Single Fiber Cleaving with Auto Rotating/Adjusting Cleaver Blade	FC-6RS	All Single Units	1 ea
	Precision Optical Fiber Cleaver - for Single Fiber Cleaving with Auto Rotating/Adjusting Cleaver Blade + Fiber Catcher	FC-6RS-C	All Single Units	1 ea
	Precision Optical Fiber Cleaver - for Single and Mass Fiber Cleaving with Auto Rotating/Adjusting Cleaver Blade	FC-6RM	All Units	1 ea
	Precision Optical Fiber Cleaver - for Single and Mass Fiber Cleaving with Auto Rotating/Adjusting Cleaver Blade + Fiber Catcher	FC-6RM-C	All Units	1 ea
	Replacement Blade for FC-6R, FC-7R, FC-8R	FCP-7R-BL	FC-6R, FC-7R, FC-8R	1 ea
Jacket Removers and Accessories	Jacket Remover, 250mm, 900mm, and Up to 3mm Jacketing	JR-M03	All Single Units	1 ea
	Thermal Jacket Remover, For Use With Single Fiber or Ribbon, Includes Cord (PC-2), 12V DC	JR-6+	All Ribbon Units (12 fibers)	1 ea
Fiber Holders	250mm Single Fiber Holders	FHS-025	Type-65, 66, 25e & 39FH, Q101	1 pr
	900mm Single Fiber Holders	FHS-09	Ribbon Units, 25e & 39FH & Q101	1 pr
	4 Count Ribbon Holders	FHM-4	Ribbon Units	1 pr
	6 Count Ribbon Holders	FHM-6	Ribbon Units	1 pr
	8 Count Ribbon Holders	FHM-8	Ribbon Units	1 pr
	10 Count Ribbon Holders	FHM-10	Ribbon Units	1 pr
	12 Count Ribbon Holders	FHM-12	Ribbon Units	1 pr
	Lynx2 Metal Ferrule Holder	LYNX2-UML-C	Ribbon Units	1 ea
	Lynx2 Metal Sleeve Holder	LYNX2-UML-S	Ribbon Units	1 ea
	Lynx2 MPO Metal Ferrule Holder	FHM-12-MPO-MTL	Ribbon Units	1 ea

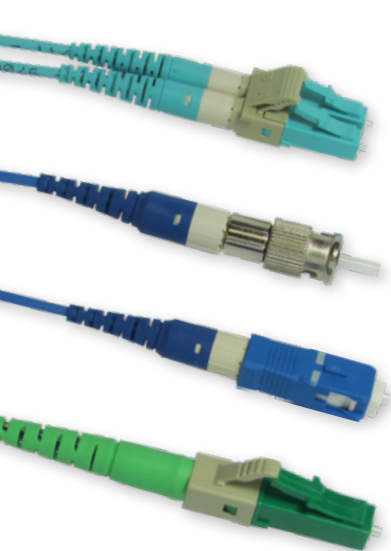


FUSION SPLICER + CONNECTIVITY

SOLUTION ORDERING GUIDE



Lynx CustomFit™ 2 Splice-On Connectors



Sumitomo Electric Lightwave continues its tradition of innovation and customer focused, market driven product advancements with the release of the Lynx2-PLUS. Maintaining all of the quality standards of the Lynx2, the Lynx2-PLUS incorporates an enhanced installation procedure and smaller overall completed connector design.

With the Lynx2-PLUS, termination time for 2, 3 and 4.8mm cord applications has been reduced by half for complete connectorization in approximately 2 minutes. The new connectors no longer require furcation tubing for 2, 3 and 4.8mm applications, resulting in shorter, more aesthetic connectors. The finished product mirrors factory pre-terminated jumpers, trunks, harnesses and/or arrays.

Like the Lynx2-MPO, customized, On-Site, Real-Time field terminations and cable builds at exact lengths are now made possible, enabling quick, easy, and reliable customized permanent field terminations without the shorts, excess slack, and logistic delays of pre-terminated cables.

Compatible with all SC, LC, FC and ST style fiber optic connectors, Lynx2-PLUS offers revolutionary Real-Time, On-Site flexibility for quick MACs, repairs, and restorations for minimal downtime, while eliminating crimping tools, gels, splice trays, and the inventory of varying length of pre-terminated jumpers — providing the industry's most cost effective, reliable, and advanced choice in fiber termination.

T-400S Active Clad Alignment Handheld Fusion Splicer



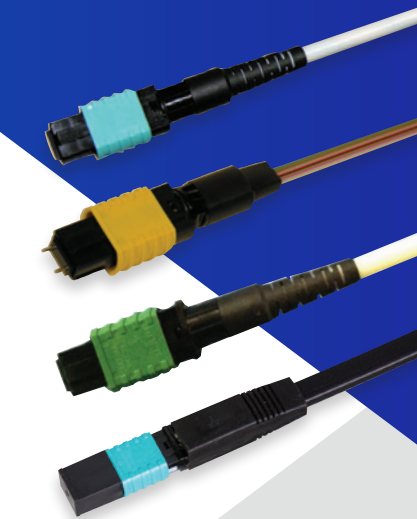
SEL's new T-400S Active Clad Handheld Fusion Splicer features a high resolution display, fiber end face evaluation and post joining loss estimation providing assurance of a successful fiber termination. The handheld fusion splicer removes the technician judgement call required on all other forms of termination by using advanced optical technology, high precision motors and the latest embedded software to completely automate the installation of an optical connector and all at a cost similar to low tech, tool centric connector systems.

ORDERING INFORMATION	
TYPE-400S-ACA-KIT-6SC	Splicer Kit T400S with Accessories with FC-6S-C Cleaver, Includes splicer T-400S, battery unit BU-15, Shipping case SC-15, Spare electrodes and cooling tray, TQ400-CORDPACK, Power Supply Adapter PS-T400-15, Fiber Protection Sleeves FPS-1, Jacket Remover tool JR-M03, Cleaning tool FUS-CLN-KIT, Cleaver FC-6S-C
TYPE-400S-ACA-KIT-6SCFH	Splicer Kit T400S with Accessories FC-6S-C Cleaver & Fiber Holders, Includes splicer T-400S, battery unit BU-15, Shipping case SC-15, Spare electrodes and cooling tray, TQ400-CORDPACK, Power Supply Adapter PS-T400-15, Fiber Protection Sleeves FPS-1, Jacket Remover tool JR-M03, Cleaning tool FUS-CLN-KIT, Cleaver FC-6S-C, Shipping Case & Cleaning Kit PLUS 250um and 900um Loose Buffer Fiber
TYPE-400S-ACA-KIT-8R	Splicer Kit T400S with Accessories FC-8R Cleaver, Includes splicer T-400S, battery unit BU-15, Shipping case SC-15, Spare electrodes and cooling tray TQ400-CORDPACK, Power Supply Adapter PS-T400-15, Fiber Protection Sleeves FPS-1, Jacket Remover tool JR-M03, Cleaning tool FUS-CLN-KIT, Cleaver FC-8R
TYPE-400S-ACA-KIT-8RFH	Splicer Kit T400S with Accessories FC-8R Cleaver & Fiber Holders, Includes splicer T-400S, battery unit BU-15, Shipping case SC-15, Spare electrodes and cooling tray TQ400-CORDPACK, Power Supply Adapter PS-T400-15, Fiber Protection Sleeves FPS-1, Jacket Remover tool JR-M03, Cleaning tool FUS-CLN-KIT, Cleaver FC-8R, Shipping Case & Cleaning Kit PLUS 250um 900um and Loose Buffer Fiber Holders

Lynx CustomFit™ 2 MPO Splice-On Connectors

Sumitomo's Lynx2-MPO is the industry's first MPO fusion splice-on field installable connector for customized, on-site, terminations. The breakthrough technology of the Lynx2-MPO meets the needs of the network for greater optical fiber density and addresses the connectivity demands for faster and easier terminations, upgrades, repairs and restorations, and significant cost savings required for today's data center, enterprise network, outside plant, OEM, central office, and virtually any FTTx network application.

MTP® compatible, the Lynx2-MPO is the perfect solution for optical fiber ribbon and loose tube round cord and patch cord terminations. Like all Lynx2 fusion splice-on connectors (SC, LC, FC, and ST), the Lynx2-MPO allows the technician to make permanent terminations with the exact cable length for fast and easy installations and upgrades at the work site. The on-site customization facilitated by the Lynx2 connectivity method eliminates the risk of shorts and slack, repair lag, and logistic delays associated with preterminated cables and pigtails — making the Lynx2-MPO your best choice in customized fiber termination.



LYNX2-PLUS Part Numbering Guide (Single Package)			
LYNX2 - AA (AA = Connector Style)	BBB (BBB = Endface Polish)	CCCC (CCCC = Fiber Type)	DDDDD (DDDDD = Media Diameter)
 LC SC FC ST (Not Available in APC)	 APC Angled Polished <-65dB Single-mode GREEN HOUSING UPC Ultra Polished <-55dB Single-mode BLUE HOUSING PC Physical Contact <-30dB - Multimode	 SM Single-mode M6 Multimode 62.5µm BEIGE HOUSING M5 Multimode 50µm BLACK HOUSING M510G Multimode 50µm Laser Optimized OM3 & OM4 Compatible AQUA HOUSING	 250900 For 250µm or 900µm Tight Buffer 250FT8 For 250µm with 8" Furcation Tube This option is only for Singlemode SC-UPC & SC-APC 900LT For 900µm Loose Buffer/ ABF Breakout Kit Compatible 2.0 For 2.0mm Cord 3.0 For 3.0mm Cord 3.0DCL Only for LC Duplex Application with 3.0mm Cord 4.8 For 4.8mm Cord (SM/SC/APC Only)
EXAMPLES LYNX2 - LCPC - M510G - 2.0 Part Number is: LYNX2-LCPCM510G-2.0 LYNX2 - SCUPCSM - 250900 Part Number is: LYNX2-SCUPCSM-250900			

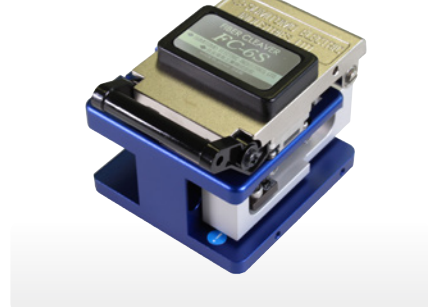
Precision Cleavers



FC-8R
Precision Hand-Held Automatic Blade Rotation Cleaver



FC-6R
Precision Bench Top Automatic Blade Rotation Cleaver with Scrap Collector



FC-6S
High Precision Bench Top Single Fiber Cleaver

Fusion Splice Protection Sleeves

PART NUMBER	DESCRIPTION	UOM
FPS-1-BX	Single Fiber, 250 to 900mm, 60mm (500 per bx)	1 box
FPS-61-2.6-BX	Single Fiber, 250 to 900mm single End Opening, Thin-2.6mm Diameter, 61mm (500 per bx)	1 box
FPS-6-BX	2 to 12 ct. Ribbon, 40mm (250 per bx)	1 box
FPS-26(24)	250 to 900mm, 26mm (24 per pk)	1 pk
FPS-40-BX	Single Fiber, 250 to 900mm, 40mm (500 per bx)	1 box

For ordering assistance, please contact Inside Sales at 800-358-7378 or visit www.SumitomoElectricLightwave.com

LYNX2-MPO- PART NUMBERING GUIDE			
LYNX2-MPO12 A (A = Connector Gender)	BB (BB = Fiber)	CC (CC = Fiber Type)	DDDDD (DDDDD = Fiber Media)
 M (Male) E (Female) POLARITY Specifying Polarity is not required. See installation instructions.	 SM (Single-Mode) MM (Multimode)	 LL Low Loss (IL ≤ 35dB RL ≥ 60dB) YELLOW HOUSING SL Standard Loss (IL ≤ 75dB RL ≥ 60dB) GREEN HOUSING Q1 Multimode 62.5µm (IL ≤ 35dB RL ≥ 20dB) BEIGE HOUSING Q2 Multimode 50µm (IL ≤ 35dB RL ≥ 20dB) BLACK HOUSING Q3 Multimode 50µm Laser Optimized (IL ≤ 35dB RL ≥ 20dB) OM3 & OM4 Compatible AQUA HOUSING	 RBN For 12f Ribbon (No Jacket) RBC For 12f Ribbon (With Jacket) RC3.0 For 3.0mm Cord STUB Ferrule Stub Only
EXAMPLES (LYNX2-MPO12-ABBCC-DDDDD-EEE)			
 LYNX2 - MPO12 E - SMLL - RBN Part Number is: LYNX2-MPO12E-SMLL-RBN	 LYNX2 - MPO12 M - MM03 - RC3.0 Part Number is: LYNX2-MPO12M-MM03-RC3.0		